



# SEND Newsletter

Issue 7, Spring 2024



Lilian Koder, SENDCo

Welcome to this term's edition of our newsletter specially produced for parents and carers of pupils with Special Educational Needs and Disabilities (SEND) at DHJS.

The aim is to provide you with useful and up-to-date information about how SEND pupils are supported at DHJS and signpost you to further information and resources.

We are very proud to be an inclusive school where every child is valued and supported as an individual and we are delighted that the quality of our SEND provision was recognised by Ofsted when they inspected our school in March last year. Inspectors concluded that pupils with SEND 'are very well supported to access the full curriculum' and this continues to be at the heart of our approach to inclusion at Dulwich Hamlet.

## New Speech and Language Therapist



You can find our SEND Policy and SEND Information Report [here](#).

Claire Lekenne, from the company Words First has been working with us since January and has already made a real impact, getting to know children and staff across the school. Some of you have already met Claire at EHCP annual reviews this term.

### A bit about Claire...

Fascinated by language and keen to work with children, Claire originally thought about becoming a teacher but then decided to train as a Speech and Language Therapist. She qualified over 5 years ago and recently moved to the UK from Belgium.

A typical day for Claire involves working with 5 or 6 individual children or small groups. In between, she spends time talking to staff and planning activities to ensure they are fun, engaging and targeting specific skills.

Some children may need support with their speech development but most often, therapy is used to develop language skills, both **receptive** (how language is understood) and **expressive** (how language is used by the speaker e.g. vocabulary, grammar). Developing children's social communication skills, including listening, attention, turn-taking and friendship-building is also a key part of a Speech and Language Therapist's work.

### Claire's tips for parents and carers:

*"Explore language together through chatting and reading together—both of these really help children to acquire new vocabulary. Model talking about your own day rather than just asking about theirs."*

## World Down Syndrome Day 2024

On Tuesday 19th March we had an assembly in school all about Down Syndrome to raise children's awareness as part of our ongoing work celebrating difference at Dulwich Hamlet. Then on Thursday 21st March we marked **World Down Syndrome Day** by joining in with the **Lots of Socks** campaign. Many children came to school wearing their brightly coloured, funky socks and in the process, we raised £105 for the charity **Down Syndrome International**.



### Did you Know?

The 21st day of March (the 3rd month of the year) was selected to signify the uniqueness of the triplication (trisomy) of the 21st chromosome which causes Down Syndrome.

### How to get in touch

In the first instance, contact your child's class teacher. If you need to contact the SENDCo, you can email [lkoderl.210@lgflmail.org](mailto:lkoderl.210@lgflmail.org) or phone the school office on 020 7525 9188 and ask for Lilian Koder.

### Useful Links

**Southwark Autism Support Team (AST)** - contact Mr B for advice on 07802 860871 or [blagoje.vucinic@southwark.gov.uk](mailto:blagoje.vucinic@southwark.gov.uk) and see [website](#) for details of courses and coffee mornings.

**Southwark Information and Advice Service (SIAS)** 0207 525 3104 or [sias@southwark.gov.uk](mailto:sias@southwark.gov.uk)

**Bell House, Dulwich** - [courses and events](#) including touch-typing this Easter.

**Touch-Typing Programmes**- BBC Dance Mat Typing (free); Doorway Online Typing (free); Typing.com (free); Nessy Fingers.

**Place 2 Be** children and young people's mental health charity has a wealth of resources [here](#) including parenting advice and activities for families.

**SPRING HOLIDAY FOOD & PLAY ACTIVITIES FOR AUTISTIC CHILDREN AGE 6-15**

Arts & Crafts, Music & Dance, Sports & Play, Trips Out, Sensory Activities, Food & Nutrition & Many More.

Dates: April: 2nd, 3rd, 4th., 5th, 8th, 9th, 10th, 11th & 12th  
9:30am - 2:30pm

Lambeth site: 161-167 Clapham Manor St. SW4 6DB  
Southwark site: Neckinger TRA Hall, 87 Spa Rd, London SE16 3SG

For bookings contact 07460399290 or [autismvoice1@gmail.com](mailto:autismvoice1@gmail.com)

Remember to always state the site you're booking to attend

The London Community Foundation Our Supporters



"Neurodiversity may be every bit as crucial for the human race as biodiversity is for life in general. Who can say what form of wiring will prove best at any given moment"

- Harvey Blume, Journalist

[www.neurodiversityweek.com](http://www.neurodiversityweek.com)

## Neurodiversity Celebration Week 2024

We had a celebratory assembly this week with a focus on Epilepsy. You can also find a wealth of resources [here](#) to support conversations about this important topic at home.



## SEND Parent and Carer Café March 2024

It was great to see many parents and carers of pupils with SEND at our SEND café earlier this month.

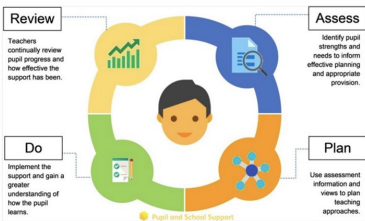
This was an opportunity to gain an overview of our approach to SEND and the systems in place at the Hamlet to support our pupils with SEND, including:

- ◆ What Ofsted said about our SEND provision in March 2023 and our priorities for improvement.
- ◆ How we work with external professionals (including the Speech and Language Therapist, see page 1, above)
- ◆ How we use the Assess, Plan, Do, Review cycle (see below) to identify pupils' individual needs and plan the support that they require.
- ◆ Individual Learning Plans—their purpose, format and how they are reviewed each term.

If you missed this café, you can find the key information in our SEND Policy and SEND Information Report [here](#).

Look out for details of our next SEND café in the Hamlet Herald!

### 3. SEND Provision – processes and systems



This includes:

- Termly leadership team Pupil Progress Meetings where we discuss the progress of every child in the school
- In-class observations by the SENDCo
- Discussions with parents and carers
- Listening to pupils' views about their learning
- Looking at pupils' work
- Carrying out a range of assessments appropriate to each subject and year group
- Monitoring attainment and progress data
- Regular communication between all the different staff members working with each pupil.

## How do we support children's emotional development and well-being at Dulwich Hamlet?



### Drawing and Talking Therapy

1:1 session for 12 weeks

Led by Miss Green, trained HLTA during afternoon lessons.

### Therapy Dog

1:1 session each week

Pets as Therapy dog Winnie and volunteer Susie visit us every Tuesday afternoon.

### Play Therapy

1:1 or group session each week

Led by Miss Gomez, trained play therapist, during afternoon lessons.

### Art Therapy

1:1, group session or lunchtime drop-ins every week

Asia Scott, Art Psychotherapist, works here every Wednesday.

*If your child is taking part in any of the above interventions, you will always be informed by the SENDCo.*

## Edukey Learning Plans

Parents and carers of pupils on the SEND register will shortly receive this term's individual learning plans which we produce using the online platform, Edukey Provision Map. These will be sent by email before the Easter holidays and will include the class teacher's comments on your child's progress against each of their outcomes this term. You will also be able to read some comments about their progress in some of the interventions they have participated in this term.

We hope that this will give you helpful information about how your child is supported in school and the impact that the additional support is having on their progress and development. If you have any questions about your child's plan, please contact their class teacher after the holidays. Here is an example of the teacher comments you will see on your child's reviewed plan:

Multiplication	To gain in fluency with the 2 and 3 times tables	Observed on 5 out of 5 occasions.	Opportunities to develop and practice this understanding in early learning and maths lessons in dialogue with class teacher	Victoria Begley (Classroom Teacher)	+1 - Much improved fluency with times tables. New target to learn all x tables up to 12x12 and apply this knowledge to short multiplication.
----------------	--	-----------------------------------	---	-------------------------------------	--

